



JAN - DEC 2022

# ENVIRONMENTAL TRAINING

## BOOST YOUR CAREER

COURSES ARE: SELF-PACED | IN-PERSON | WEBCASTS

### GROW PROFESSIONALLY

- 2 Online Self-Paced Courses
- 4 Environmental Certifications
- 4 ESG & Green Business Management
- 8 Pollution Prevention Workshop



**ENVIRONMENTAL COMPLIANCE**



**AIR QUALITY TRAINING**



100% online, self-paced, 24/7 access, anytime, anywhere

Our suite of online, self-paced training courses.

**AIR QUALITY COMPLIANCE IN TEXAS AIR210**

This course provides an overview of air quality regulations and permitting in the state of Texas. Those new or experienced to air quality compliance will benefit from this course. Through classroom exercises, students will gain an understanding of the state regulatory requirements. **\$395**

**CHEMISTRY FOR THE ENVIRONMENTAL PROFESSIONAL MM722**

This class is designed for environmental professionals seeking knowledge in basic chemistry practices to assist them in everyday decision-making. This class provides attendees tools to understand environmental data, chemical analyses, and treatment options. **\$750**

**ENVIRONMENTAL AUDITS MGE810**

The consequences of non-compliance can include increased liability and significant fines and penalties for your company. This course provides participants with an in-depth look at environmental compliance auditing in all types of organizations in accordance with demonstrated industry techniques and standards of practice. **\$895**

**ESG CRITERIA OVERVIEW MGE910**

The consequences of non-compliance can include increased liability and significant fines and penalties for your company. This course provides participants with an in-depth look at environmental compliance auditing in all types of organizations in accordance with demonstrated industry techniques and standards of practice. **\$395**

**FUNDAMENTALS OF THE CLEAN AIR ACT AIR201**

The Clean Air Act (CAA) requires facilities to implement robust air emission control practices which are regulated and enforced through a complex permitting process. During this class, the instructor will provide an overview of the most pertinent CAA requirements, including the New Source Review process and Title V permitting, as well as programs to manage hazardous air pollutants and criterion pollutants. **\$750**

**INTRO TO ENVIRONMENTAL COMPLIANCE ETI101**

This course is designed to give environmental, safety, and health professionals the tools needed to reduce environmental risks. The course will present a full overview of EPA environmental regulations and demonstrate how to identify regulations pertinent to a company's operations. **\$895**

**LEAN SIX SIGMA FOR ENV. PROFESSIONALS MGE822**

Through this online course, students are given the opportunity to develop their skills and comprehension of Lean Six Sigma Principles For Environmental Professionals through focus on progressive techniques and practices in: Process improvement key concepts, The Lean PDCA process, The Six Sigma and the DMAIC process, and Common root cause and failure assessment/prevention methods. **\$650**

**RESOURCE CONSERVATION AND RECOVERY ACT WST401**

This course is designed for professionals whose job duties include managing, storing, and shipping hazardous waste; managing solid waste; and identifying underground storage tanks (USTs). Participants will learn about the federal Resource Conservation and Recovery Act (RCRA) and become familiar with a wide array of related federal, state, and local agencies as well as their requirements. The course will present the basics of managing non-hazardous waste, permitting processes, common violations, and waste minimization. **\$895**

**ROOT CAUSE ANALYSIS FOR ENV. PROFESSIONALS MGE821**

Through this online course, students are given the opportunity to develop their skills and comprehension of Root Cause Analysis For Environmental Professionals through focus on progressive techniques and practices in: Lean Six Sigma basis problem solving techniques, Failure mode effects analysis (FMEA), and Root cause failure analysis (RCFA). **\$395**

**STACK TESTING / AMBIENT MONITORING PROJECT MANAGEMENT AIR 211**

To ensure that the regulated community understands EPA data quality assurance requirements for performing stack testing and ambient monitoring, this course provides attendees an overview of key concepts and best management practices for successful Stack Testing/Ambient Monitoring Project Management and testing oversight. Topics covered: review of common EPA stack test methods and common pollutants monitored, how to read and interpret a stack test report, identify errors/ omissions, identifying key siting and configuration factors that affect monitoring, required data collection, and quality assurance necessary for data validation. Prerequisite: AIR 201 Fundamentals of the Clean Air Act. **\$395**

**STORMWATER POLLUTION PREVENTION PLANS (SWPPP) WTR302**

Students will learn how to manage the complexities of storm water management and relate regulatory requirements to ensure compliance to federal, state and local laws. The focus of the course is to offer practical solutions to factors that contribute to pollution of our nation's waters. In addition to presentations of subject matter, students are assigned case studies, reading material and quizzes designed to build knowledge, skills and abilities in this vital field. **\$650**

**TOXICS RELEASE INVENTORY (TRI) REPORTING MGE818**

The purpose of this course is to give students the ability to comply with the requirements of the TRI reporting requirements under the Emergency Planning and Community Right to Know Act. Reporters must track a list of over 600 chemicals to ensure that they do not manufacture process or otherwise use threshold amounts. This chemical list is revised regularly, including a recent revision during the COVID-19 pandemic. EPA is the primary enforcer of TRI violations. In addition to continued enforcement by EPA, class action lawsuits are filed by public interest groups. **\$650**

**ONLINE RENEWABLE ENERGY COURSES**

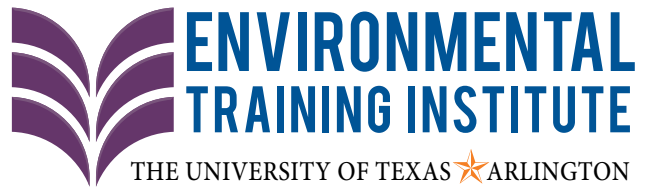
Visit [uta.worldeducation.net](http://uta.worldeducation.net) for more information

Alternative Energy Specialist .....	\$1,895
An Overview of Sustainable Management.....	\$195
Certified Indoor Air Quality Manager .....	\$1,595
Certified Indoor Environmentalist (CIE).....	\$1,595
Certified Renewable Energy Specialist .....	\$2,395
Certified Sustainability Specialist .....	\$2,195
Going Green.....	\$195
LEED Green Associate Exam Prep .....	\$995
Photovoltaic Energy Professional .....	\$1,795
Renewable Energy Specialist.....	\$2,295
Senior Certified Sustainability Professional.....	\$3,595
Solar Installation Professional .....	\$3,795
Sustainability Professional.....	\$1,895

We are constantly adding new online course content. Please visit [uta.edu/ded/eti](http://uta.edu/ded/eti) for our current online course listings.



# INSIDE THIS ISSUE . . .



CERTIFICATIONS P. 4 - 5



AIR TRAINING P. 7



WASTE TRAINING P. 8



WATER & WASTEWATER P. 9



ENVIRONMENTAL MANAGEMENT P. 10

The Environmental Training Institute offers professional training for those managing environmental challenges or implementing environmental regulations. Through our Training Institute, we are able to provide Environmental, Health, and Safety (EHS) professionals five certification programs that bundle curriculum and cultivate expertise in three distinct environmental areas: Regulatory, Science, and Management.

## TABLE OF CONTENTS

Online Courses	2	Waste Training	8
Certifications	4 - 5	Water & Wastewater Training	9
Renewable Energy Training	4 - 5	Environmental Management Training	10
EPA Outreach	6	Environmental Science Training	11
Air Training	7	Policies	11
Contract Training	7		

## 3 EASY WAYS TO REGISTER

 <b>Online</b> <a href="http://uta.edu/ded/eti">uta.edu/ded/eti</a>	 <b>By Phone</b> 817.272.2581	 <b>In Person</b> 140 W. Mitchell St. Arlington, TX 76010
---	--	--

## STAY CURRENT WITH OUR FREE WEBINARS

These free, 1-hour webinars will allow you to connect with a field specialist, who will speak on current environmental topics. Participants will be able to ask questions and network with contemporaries in their field. Each webinar will cover a unique topic. Times will vary. Check the ETI website at [uta.edu/ded/eti](http://uta.edu/ded/eti) for details.

Stay up to date on our upcoming webinar topics by signing up for our weekly eblasts at [uta.edu/ded/eti](http://uta.edu/ded/eti)

### UPCOMING WEBINAR DATES:

01/24/2022	05/16/2022	09/12/2022
02/14/2022	06/13/2022	10/17/2022
03/14/2022	07/11/2022	11/14/2022
04/12/2022	08/15/2022	12/12/2022



## SPECIALIST IN ENVIRONMENTAL REGULATIONS

### FOUR REQUIRED COURSES:

- ETI 101: Intro to Environmental Compliance
- AIR 201: Fundamentals of the Clean Air Act
- WTR 301: Intro to Water & Wastewater Regulations
- WST 401: Resource Conservation & Recovery Act



## MASTER CERTIFICATION FOR THE ENV. PROFESSIONAL

### EARN ONE OF THESE ETI CERTIFICATIONS:

- Environmental Regulatory Professional
- Environmental Science Professional
- Environmental Management Professional

### ADD ONE REQUIRED COURSE:

- MS 901: Management System Design for EHS  
Visit [uta.edu/ded](http://uta.edu/ded) for MS 901 schedule

### ADD THREE ADVANCED ETI ELECTIVES

Note: Environmental electives used for the required environmental certification (ERP, ESP, EMP) chosen may not be used toward the Master Certification for the Environmental Professional.



## CERTIFICATION PROGRAMS



## ENVIRONMENTAL SCIENCE PROFESSIONAL

### FOUR REQUIRED COURSES:

- ETI 101: Intro to Environmental Compliance
- AIR 201: Fundamentals of the Clean Air Act
- WTR 301: Intro to Water & Wastewater Regulations
- WST 401: Resource Conservation & Recovery Act

### CHOOSE FOUR ELECTIVES:

- WTR 305: Wastewater Pretreatment, Strategies, & Controls
- WTR 308: Potable Water Storage Inspection Techniques
- MM 722: Intro to Chemistry for EHS
- MM 732: Intro to Phase I & II Environmental Site Assessments
- MGE 818: Toxic Release Inventory (TRI) Reporting
- MGE 821: Root Cause Analysis for Env. Professionals
- MGE 822: Lean Six Sigma for Env. Professionals

NEW

RENEWABLE ENERGY

## Introducing our suite of renewable energy courses.

### RENEWABLE ENERGY RESOURCES

MGE 901 | 8 Hours | \$395

An overview of State Energy and Environmental Programs and resources available to help create and implement energy strategies that reduce Air Pollution while also achieving other environmental, economic, and energy goals.

Feb 15, 2022	Arlington, TX
Jun 17, 2022	Live Webcast
Nov 30, 2022	Arlington, TX

### GREEN BUSINESS MANAGEMENT

MGE 920 | 14 Hours | \$495

Learn the newest ways to improve energy performance and efficiency with our green business management program. Going green in business means more than just reducing expenses. As consumers are becoming more aware and more educated in sustainable practices, they are turning to businesses and service providers to do the same. Energy conservation, waste reduction, environmental responsibility – these are all things that are a part of green business management.

Mar 16 - 17, 2022	Arlington, TX
Jul 14 - 15, 2022	Live Webcast
Nov 10 - 11, 2022	Arlington, TX

### SUSTAINABILITY

MGE 804 | 32 Hours | \$895

Participants will perform sustainability analyses using real-life example situations, discuss how to set sustainability goals and study the methods and tools used to analyze the sustainability performance of private and public organizations.

Mar 29 - Apr 1, 2022	Live Webcast
Jul 19 - 22, 2022	Arlington, TX
Nov 29 - Dec 2, 2022	Live Webcast

### BUSINESS CONTINUITY & DISASTER RECOVERY

14 Hours | \$795

This program will provide individuals with the knowledge to implement a business continuity/disaster recovery program. This three-day course is designed to take the participants from a novice level, with little or no past experience, to an advanced level of recovery planning

Feb 19 - 26, 2022	Live Webcast
Jun 11 - 25, 2022	Live Webcast
Sep 17 - 24, 2022	Live Webcast



Sharing Knowledge

Managing Risks

Improving Compliance

Reducing Costs



## ENVIRONMENTAL MANAGEMENT PROFESSIONAL

### SIX REQUIRED COURSES:

- ETI 101: Intro to Environmental Compliance
- AIR 201: Fundamentals of the Clean Air Act
- WTR 301: Intro to Water & Wastewater Regulations
- WST 401: Resource Conservation & Recovery Act
- MGE 801: Environmental Management ISO 14001:2015
- MGE 810: Environmental Audits

### CHOOSE THREE ELECTIVES:

- AIR 211: Stack Testing/Ambient Monitoring Project Management
- WST 410: Managing Hazardous Waste in Texas
- MM 711: Environmental Permitting
- MM 732: Intro to Phase I & II Environmental Site Assessments
- MGE 811: Intro to Environmental Law
- MGE 818: Toxic Release Inventory (TRI) Reporting
- MGE 821: Root Cause Analysis for Env. Professionals
- MGE 822: Lean Six Sigma for Env. Professionals



## ENVIRONMENTAL REGULATORY PROFESSIONAL

### FOUR REQUIRED COURSES:

- ETI 101: Intro to Environmental Compliance
- AIR 201: Fundamentals of the Clean Air Act
- WTR 301: Intro to Water & Wastewater Regulations
- WST 401: Resource Conservation & Recovery Act

### CHOOSE FOUR ELECTIVES:

- AIR 210: Air Quality Compliance in Texas
- WTR 302: Stormwater Pollution Prevention
- MGE 810: Environmental Audits
- MGE 811: Intro to Environmental Law
- MGE 817: Pollution Prevention & Lean Principles
- MGE 818: Toxic Release Inventory (TRI) Reporting
- MGE 821: Root Cause Analysis for Env. Professionals
- MGE 822: Lean Six Sigma for Env. Professionals

## ESG CRITERIA OVERVIEW

MGE 910 | 8 Hours | \$395

Learn about the criteria used by investors when evaluating a company for Environmental, Social, and Governance rating. These criteria reflect on a company's stance regarding to elements such as climate change, waste and pollution, health and safety, working conditions, corruption, and tax strategies.

Feb 2, 2022	Albuquerque, NM
Mar 8, 2022	Live Webcast
May 6, 2022	Oklahoma City, OK
Jul 27, 2022	Live Webcast
Aug 19, 2022	Lake Charles, LA
Nov 22, 2022	Live Webcast

## STRATEGIES FOR IMPLEMENTING ESG CRITERIA

MGE 911 | 14 Hours | \$495

Participants will review the most common ESG Criteria and strategies that you can use in your organization to implement these elements and improve your company's ESG rating.

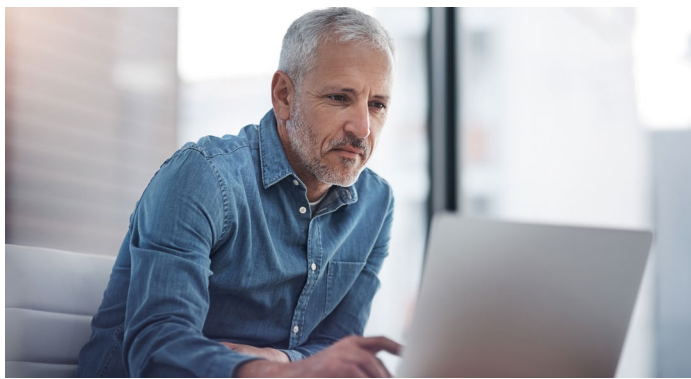
Apr 12 - 13, 2022	Live Webcast
Aug 16 - 17, 2022	Live Webcast
Dec 15 - 16, 2022	Live Webcast

## 100% ONLINE, SELF-PACED, ANYTIME, ANYWHERE

Visit [uta.worldeducation.net](http://uta.worldeducation.net) to register

Alternative Energy Specialist.....	\$1,895
An Overview of Sustainable Management.....	\$195
Certified Indoor Air Quality Manager .....	\$1,595
Certified Indoor Environmentalist (CIE).....	\$1,595
Certified Renewable Energy Specialist .....	\$2,395
Certified Sustainability Specialist .....	\$2,195
Going Green.....	\$195
LEED Green Associate Exam Prep .....	\$995
Photovoltaic Energy Professional .....	\$1,795
Renewable Energy Specialist.....	\$2,295
Senior Certified Sustainability Professional.....	\$3,595
Solar Installation Professional .....	\$3,795
Sustainability Professional.....	\$1,895





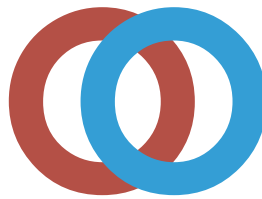
### INTRODUCTION TO ENVIRONMENTAL COMPLIANCE

ETI 101 | 32 Hours | \$895

This course presents a full overview of EPA environmental regulations and addresses elements of the major environmental programs at the state level. Activities and case studies will be used throughout the course in order for participants to apply the material presented.

This course is also available online, at your own pace at [dedtraining.com](http://dedtraining.com)

Feb 22 - 25, 2022	Arlington, TX
Feb 22 - 25, 2022	Austin, TX
Feb 22 - 25, 2022	Oklahoma City, OK
Feb 22 - 25, 2022	Live Webcast
Apr 5 - 8, 2022	Live Webcast
Jun 21 - 24, 2022	Arlington, TX
Jun 21 - 24, 2022	Houston, TX
Jun 21 - 24, 2022	Live Webcast
Jun 21 - 24, 2022	West Memphis, AR
Aug 9 - 12, 2022	Live Webcast
Oct 18 - 21, 2022	Arlington, TX
Oct 18 - 21, 2022	Austin, TX
Oct 18 - 21, 2022	Lake Charles, LA
Oct 18 - 21, 2022	Live Webcast
Dec 6 - 9, 2022	Live Webcast



OUTREACH  
PORTAL

UTA EPA Outreach Trainers are now able to submit UTA EPA Outreach card request through the Outreach Portal via our website, OutreachPortal.com. For more information on using the Outreach Portal, please contact our office: **866.906.9190** | [outreach@uta.edu](mailto:outreach@uta.edu).

### EPA OUTREACH TRAINER COURSE

ETI 501 | 32 Hours | \$695

This course certifies trainers to teach the EPA 8-Hour Environmental Hazard Awareness course and allows them to be recognized by UTA as an EPA Outreach Trainer. During the course, EPA topics will be reviewed and training techniques presented to promote environmental awareness among workers and equip them to better protect human health and environmental resources.

**Note:** Participants are encouraged to bring a laptop.

**Prerequisites:** ETI 101 - Introduction to Environmental Compliance with completion exam AND three years of environmental program experience. A college or master's degree in environmental programs or a Registered Environmental Manager (REM) designation from the National Registry of Environmental Professions may be substituted for two years of experience.

Feb 1 - 4, 2022	Live Webcast
Jun 14 - 17, 2022	Arlington, TX
Oct 11 - 14, 2022	Houston, TX

### UPDATE FOR EPA OUTREACH TRAINER COURSE

ETI 503 | 16 Hours | \$495

This course is designed for Authorized Outreach Trainers who completed the ETI 501 EPA Outreach Trainer Course. This course provides an update on EPA regulations and instructional approaches.

**Prerequisites:** Authorized Outreach Trainers are required to complete the ETI 501 EPA Outreach Trainer Course.

**Refresher Training:** Authorized Outreach trainers are required to attend the ETI 503 Update for the EPA Outreach Trainer Course at least once every three (3) years to maintain their trainer status.

Apr 28 - 29, 2022	Arlington, TX
Aug 30 - 31, 2022	Houston, TX
Dec 1 - 2, 2022	Live Webcast

### TECHNICAL & BUSINESS WRITING NEW

This program prepares the adult learner for a career as a technical writer and communicator in a variety of fields. It provides participants with advanced writing and communication skills to clearly and precisely convey technical information to a specific audience. From composing various documents to editing another's copy, you will learn and apply the C's of effective writing: Clear, Concise, Coherent, Cohesive, Consistent, and Clean.

Visit [uta.edu/ded/ced](http://uta.edu/ded/ced) for class dates and more information.



# FREE EVENT EARTH DAY APRIL 22, 2022

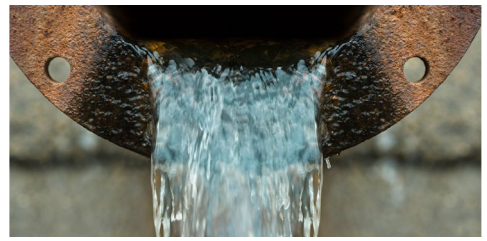
Join us at our annual free Earth Day event, with free professional development from environmental experts.

Event hosted by ETI



ENROLL TODAY  
[uta.edu/ded/eti](http://uta.edu/ded/eti)





## FUNDAMENTALS OF THE CLEAN AIR ACT

**AIR 201 | 24 Hours | \$750**

Provides an overview of the Clean Air Act requirements, including the New Source Review process and Title V permitting. Participants are presented with solutions to manage hazardous air pollutants and criterion pollutants.

This course is also available online, at your own pace at [dedtraining.com](https://dedtraining.com)

Jan 13 - 14, 2022	Live Webcast
Mar 24 - 25, 2022	Albuquerque, NM
Mar 24 - 25, 2022	Arlington, TX
Mar 24 - 25, 2022	Houston, TX
Mar 24 - 25, 2022	Live Webcast
May 5 - 6, 2022	Live Webcast
Jul 21 - 22, 2022	Arlington, TX
Jul 21 - 22, 2022	Austin, TX
Jul 21 - 22, 2022	Oklahoma City, OK
Jul 21 - 22, 2022	Live Webcast
Sep 8 - 9, 2022	Live Webcast
Nov 17 - 18, 2022	Arlington, TX
Nov 17 - 18, 2022	Houston, TX
Nov 17 - 18, 2022	Live Webcast
Nov 17 - 18, 2022	West Memphis, AR

## AIR QUALITY COMPLIANCE IN TEXAS

**AIR 210 | 8 Hours | \$395**

This one-day course provides an overview of air quality regulations and permitting in the state of Texas. Participants will gain an understanding of the state regulatory requirements.

This course is also available online, at your own pace at [dedtraining.com](https://dedtraining.com)

<b>Prerequisite:</b> AIR 201 Fundamentals of the Clean Air Act	
Mar 4, 2022	Arlington, TX
Jul 1, 2022	Live Webcast
Nov 23, 2022	Live Webcast

## STACK TESTING/AMBIENT MONITORING PROJECT MANAGEMENT

**AIR 211 | 8 Hours | \$395**

An overview of key concepts and best management practices for successful Stack Testing/Ambient Monitoring Project Management and testing oversight. Topics include common EPA stack test methods and common pollutants monitored, stack test report, required data collection, and quality assurance.

This course is also available online, at your own pace at [dedtraining.com](https://dedtraining.com)

<b>Prerequisite:</b> AIR 201 Fundamentals of the Clean Air Act	
Apr 1, 2022	Arlington, TX
Aug 5, 2022	Live Webcast
Dec 2, 2022	Live Webcast

# UPSKILL YOUR EMPLOYEES WITH OUR TRAINING

### GROUP (CONTRACT) TRAINING

The University of Texas at Arlington Environmental Training Institute can deliver any course shown in this catalog at your site, international or domestic, in a time frame that fits your schedule with no employee travel expenses. We will come to you, wherever you are.

#### AVERAGE OPEN ENROLLMENT COST: 1 PARTICIPANT

Tuition.....	\$595
Hotel.....	\$600
Meals.....	\$320
Airfare.....	\$350
<b>COST/EMPLOYEE.....</b>	<b>\$1,865</b>

#### CONTRACT CLASS COST: UP TO 20 PARTICIPANTS

Tuition.....	\$8,000
Hotel.....	\$0
Meals.....	\$0
Airfare.....	\$0
<b>COST/EMPLOYEE.....</b>	<b>\$400</b>

### CUSTOMIZED TRAINING SOLUTIONS PROVIDE

- Curriculum tailored to your goals, objectives, and outcomes
- Cost-effective training programs
- Convenient scheduling at your facility
- Experienced instructors bring real-world solutions

Your employees can earn environmental certifications to enhance their credentials.



## RESOURCE CONSERVATION AND RECOVERY ACT

WST 401 | 32 Hours | \$895

Participants learn about the federal Resource Conservation and Recovery Act (RCRA), and federal, state, and local agencies and their requirements. Participants will be presented with the basics of managing non-hazardous waste, permitting processes, common violations, and waste minimization.

This course is also available online, at your own pace at [dedtraining.com](http://dedtraining.com)

Feb 8 - 11, 2022	Live Webcast
Apr 19 - 22, 2022	Arlington, TX
Apr 19 - 22, 2022	Houston, TX
Apr 19 - 22, 2022	Live Webcast
Apr 19 - 22, 2022	West Memphis, AR
Jun 7 - 10, 2022	Live Webcast
Aug 23 - 26, 2022	Arlington, TX
Aug 23 - 26, 2022	Austin, TX
Aug 23 - 26, 2022	Lake Charles, LA
Aug 23 - 26, 2022	Live Webcast
Oct 4 - 7, 2022	Live Webcast
Dec 13 - 16, 2022	Albuquerque, NM
Dec 13 - 16, 2022	Arlington, TX
Dec 13 - 16, 2022	Houston, TX
Dec 13 - 16, 2022	Live Webcast

## ABOVEGROUND/UNDERGROUND STORAGE TANK

WST 405 | 16 Hours | \$650

This course is designed to give a background, overview, and basic understanding of Underground Storage Tank and Aboveground Storage Tank (UST and AST) systems and components, laws, policies and guidelines to ensure compliance with federal and state environmental regulations.

Jan 20 - 21, 2022	Live Webcast
May 26 - 27, 2022	Arlington, TX
Sep 29 - 30, 2022	Austin, TX

## MANAGING HAZARDOUS WASTE IN TEXAS WORKSHOP

WST 410 | 8 Hours | \$395

This course covers the state-specific regulations for managing hazardous and industrial waste in Texas. Topics range from Texas regulations vs. Federal regulations, hazardous and industrial wastes classification, identifying and managing Texas-specific universal wastes, and more.

Prerequisite: WST 401 - Resource Conservation and Recovery Act.

Feb 18, 2022	Live Webcast
Jun 3, 2022	Live Webcast
Oct 28, 2022	Arlington, TX



**UTA**  
Environmental Training Institute  
DIVISION FOR ENTERPRISE DEVELOPMENT

## EARN YOUR CERTIFICATIONS, ANYTIME, ANYWHERE!

- Earn UTA Environmental Professional Certifications from your home or office
- Complete your SHEP environmental requirements online
- Learn on your schedule in our self-paced environment
- Take the courses when you need them

Available Online Certifications include:

- Specialist for Environmental Regulations (SER)
- Environmental Regulatory Professional (ERP)
- Environmental Science Professional (ESP)



Check our website for new and additional course offerings at [uta.edu/ded/eti](http://uta.edu/ded/eti)





## INTRODUCTION TO WATER AND WASTEWATER REGULATIONS

**WTR 301 | 24 Hours | \$795**

Introduction to compliance with water and wastewater regulations, and how those regulations impact your organization. Discussion topics include National Pollutant Discharge Elimination System permit types for storm water, industrial wastewater, domestic wastewater, and pre-treatment.

Jan 26 - 28, 2022	Arlington, TX
Jan 26 - 28, 2022	Houston, TX
Jan 26 - 28, 2022	Lake Charles, LA
Jan 26 - 28, 2022	Live Webcast
Mar 9 - 11, 2022	Live Webcast
May 18 - 20, 2022	Albuquerque, NM
May 18 - 20, 2022	Arlington, TX
May 18 - 20, 2022	Austin, TX
May 18 - 20, 2022	Live Webcast
Jul 6 - 8, 2022	Arlington, TX
Jul 6 - 8, 2022	Live Webcast
Sep 21 - 23, 2022	Arlington, TX
Sep 21 - 23, 2022	Houston, TX
Sep 21 - 23, 2022	Oklahoma City, OK
Sep 21 - 23, 2022	Live Webcast
Nov 2 - 4, 2022	Arlington, TX
Nov 2 - 4, 2022	Live Webcast

## SPILL PREVENTION, CONTROL, AND COUNTERMEASURE (SPCC)

**WTR 303 | 16 Hours | \$650**

Participants learn about SPCC plans, pollution regulations, proper storage of oil, oil transfer procedures, proper containment practices including secondary containment, and how to avoid security breaches and follow proper discharge procedures.

Feb 16 - 17, 2022	Arlington, TX
Jun 29 - 30, 2022	Houston, TX
Oct 26 - 27, 2022	Live Webcast

## WASTEWATER PRETREATMENT – STRATEGIES & CONTROLS

**WTR 305 | 16 Hours | \$650**

This course offers training for wastewater pretreatment provides practical resources to implement NPDES federal, state, and local wastewater pretreatment requirements under the Clean Water Act. Attendees will gain the ability to evaluate the need for permits and to effectively comply with permit requirements.

Mar 22, 2022	Austin, TX
Jul 28, 2022	Arlington, TX
Nov 15, 2022	Live Webcast

## POTABLE WATER STORAGE INSPECTION TECHNIQUES

**WTR 308 | 16 Hours | \$650**

This course provides participants an overview of reasons and methods for water storage facility inspection. Topics include inspection strategy development, use of underwater cameras, sediment sampling, gas monitoring, human entry into the tank, and best practices for inspection documentation.

Mar 22 - 23, 2022	Live Webcast
Jul 28 - 29, 2022	Houston, TX
Nov 15-16, 2022	Arlington, TX

## STORMWATER POLLUTION PREVENTION PLANS (SWPPP)

**WTR 302 | 16 Hours | \$650**

This course covers the fundamental requirements of a storm water pollution prevention plan. Topics for this course include how to identify a facility's potential sources of pollution, discharge, or contamination, and methods to prevent and control storm water pollution through the implementation of best management practices (BMPs). Participants will gain an understanding of erosion and sedimentation challenges, as well methods to monitor and evaluate the effectiveness of SWPPPs.

This course is also available online, at your own pace at [dedtraining.com](https://www.dedtraining.com)

Jan 11 - 12, 2022	Arlington, TX
May 24 - 25, 2022	Austin, TX
Sep 1 - 2, 2022	Live Webcast



## ENVIRONMENTAL MANAGEMENT SYSTEMS ISO 14001:2015

MGE 801 | 32 Hours | \$995

This course specifies general requirements and guidelines of the ISO 14001:2015 Environmental Management System (EMS) standard. A fully implemented EMS will provide reasonable assurance of minimal negative environmental impact, improved environmental performance, and sustainable growth.

Mar 1 - 4, 2022	Arlington, TX
Jun 28 - Jul 1, 2022	Live Webcast
Oct 25 - 28, 2022	Austin, TX

## ENVIRONMENTAL AUDITS

MGE 810 | 24 Hours | \$895

An in-depth look at environmental compliance auditing in all types of organizations in accordance with demonstrated industry techniques and standards of practice. Completion of this course will help improve compliance status, control risks, support environmental management systems, and identify opportunities for pollution prevention.

This course is also available online, at your own pace at [dedtraining.com](https://dedtraining.com)

Jan 19 - 21, 2022	Arlington, TX
Jun 1 - 3, 2022	Live Webcast
Sep 14 - 16, 2022	Houston, TX

## INTRODUCTION TO ENVIRONMENTAL LAW

MGE 811 | 24 Hours | \$750

This course assists environmental and safety managers in identifying legal issues, deepening their understanding of how the law intersects with work duties and responsibilities, and learning how best to protect themselves and their employers from claims and enforcement actions.

Jan 12 - 14, 2022	Arlington, TX
May 25 - 27, 2022	Arlington, TX
Sep 28 - 30, 2022	Arlington, TX

## POLLUTION PREVENTION AND LEAN PRINCIPLES WORKSHOP

MGE 817 | 16 Hours | \$375

This course helps you save money by reducing pollution and complying with the Texas Waste Reduction Policy Act (WRPA). You will leave this course with the tools you need to create your Pollution Prevention plan.

Jul 28 - 29, 2022	Live Webcast
Nov 3 - 4, 2022	Live Webcast
Dec 14 - 15, 2022	Austin, TX

**NEW**

## LEAN SIX SIGMA FOR ENVIRONMENTAL PROFESSIONALS

MGE 822 | 16 Hours | \$650

Participants will learn to develop their skills through focus on progressive techniques and practices in process improvement key concepts, the Lean PDCA process, the Six Sigma and the DMAIC process, and common root cause and failure assessment/prevention methods.

This course is also available online, at your own pace at [dedtraining.com](https://dedtraining.com)

Jan 18 - 19, 2022	Arlington, TX
May 3 - 4, 2022	Live Webcast
Sep 6 - 7, 2022	Live Webcast

## LEAN SIX SIGMA **NEW**

Lean Six Sigma is a methodology aimed at reducing waste. The overall goal is to identify and eliminate non-essential and non-value added steps in the business process in order to streamline production, improve quality, and establish customer loyalty.

Yellow Belt | 24 Hours | \$895

Jan 22 - Feb 5, 2022	Live Webcast
May 7 - 21, 2022	Live Webcast
Sep 10 - 24, 2022	Live Webcast

Green Belt | 32 Hours | \$895

Feb 19 - Mar 12, 2022	Live Webcast
June 4 - 25, 2022	Live Webcast
Oct 8 - 29, 2022	Live Webcast

Black Belt | 32 Hours | \$895

Mar 26 - Apr 23, 2022	Live Webcast
July 9 - 30, 2022	Live Webcast
Nov 5 - Dec 3, 2022	Live Webcast

## TOXIC RELEASE INVENTORY (TRI) REPORTING **NEW**

MGE 818 | 16 Hours | \$650

Participants will learn how to comply with the requirements of the TRI reporting requirements under the Emergency Planning and Community Right to Know Act. This chemical list is revised regularly, including a recent revision during the COVID-19 pandemic.

This course is also available online, at your own pace at [dedtraining.com](https://dedtraining.com)

Feb 3 - 4, 2022	Austin, TX
Jun 15 - 16, 2022	Live Webcast
Oct 12 - 13, 2022	Live Webcast

## ROOT CAUSE ANALYSIS FOR ENV. PROFESSIONALS **NEW**

MGE 821 | 8 Hours | \$395

Participants will develop their skills and comprehension of Root Cause Analysis through focus on progressive techniques and practices in LSS basis problem solving techniques, failure mode effects analysis (FMEA), root cause failure analysis (RCFA).

This course is also available online, at your own pace at [dedtraining.com](https://dedtraining.com)

Mar 15, 2022	Arlington, TX
Jul 12, 2022	Live Webcast
Nov 8, 2022	Live Webcast



## ENVIRONMENTAL PERMITTING - AN OVERVIEW

MM 711 | 20 Hours | \$750

This course will provide techniques for identifying the relevant types of permits and planning techniques to obtain documents in a timely fashion, which can prevent potential costs and/or violations.

Apr 26 - 28, 2022	Live Webcast
Aug 30 - Sep 1, 2022	Arlington, TX
Dec 7 - 9, 2022	Live Webcast

## INTRODUCTION TO CHEMISTRY FOR THE ENVIRONMENTAL PROFESSIONAL

MM 722 | 20 Hours | \$750

This course is designed for environmental professionals seeking knowledge in basic chemistry practices to assist them in everyday decision-making. Attendees will be provided with the tools to understand environmental data, chemical analyses, and treatment options.

Feb 9 - 10, 2022	Arlington, TX
May 31 - Jun 1, 2022	Live Webcast
Oct 12 - 13, 2022	Arlington, TX

## INTRODUCTION TO PHASE I & PHASE II ENVIRONMENTAL SITE ASSESSMENTS

MM 732 | 16 Hours | \$650

During this course, participants will learn about concepts and skills for conducting Phase I & Phase II of Environmental Site Assessments following federal requirements. Participants will be taught the numerous requirements needed during site assessments. Topics will also include documentation, sampling, and data analysis.

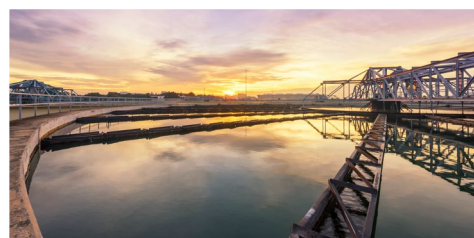
Mar 2 - 3, 2022	Live Webcast
Jul 13 - 14, 2022	Arlington, TX
Nov 9 - 10, 2022	Live Webcast

## PROJECT MANAGEMENT NEW

This program provides you with practical knowledge that can be applied immediately to enhance your job performance and productivity.

These courses are also available online, at your own pace at [dedtraining.com](http://dedtraining.com)

<b>Project Management Fundamentals   \$335</b>	
Feb 12, 2022	Arlington, TX
Sep 9, 2022	Arlington, TX
<b>Effective Project Initiation &amp; Planning   \$685</b>	
Feb 19 - 26, 2022	Arlington, TX
Oct 6 - 7, 2022	Arlington, TX
<b>Effective Project Execution &amp; Control   \$685</b>	
Mar 26 - Apr 02, 2022	Arlington, TX
Nov 3 - 4, 2022	Arlington, TX
<b>Introduction to Agile/Scrum   \$685</b>	
Apr 23, 2022	Arlington, TX
Dec 2, 2022	Arlington, TX
<b>Project Management Bootcamp   \$1695</b>	
Apr 25 - 29, 2022	Arlington, TX
Sep 26 - 30, 2022	Arlington, TX
<b>Project Management Professional (PMP) Exam Prep   \$1695</b>	
Jan 8 - Feb 5, 2022	Arlington, TX
May 16 - 20, 2022	Arlington, TX



## POLICIES

### TEXTBOOKS

All course materials will be provided by UTA unless otherwise indicated. Additional Codes of Federal Regulations (CFRs) may be purchased in English or Spanish by contacting our office. A minimum purchase amount of \$200 is required.

### ACCOMMODATIONS

The Division for Enterprise Development is dedicated to providing equal educational opportunities to all qualified course participants. Contact [cedquestions@uta.edu](mailto:cedquestions@uta.edu) or call 866-906-9190 for information regarding special accommodations.

### TITLE IX POLICY

The University of Texas at Arlington does not discriminate on the basis of race, color, national origin, religion, age, gender, sexual orientation, disabilities, genetic information, and/or veteran status in its educational programs or activities it operates. For more information, visit [uta.edu/eos](http://uta.edu/eos). For information regarding Title IX, visit [uta.edu/titleix](http://uta.edu/titleix).

### WITHDRAWAL AND TRANSFER POLICY

The University of Texas at Arlington reserves the right to change or cancel any class. In the event that a class must be changed or canceled, you will be notified by email and/or phone. You are required to provide a valid email address and phone number to ensure notification. Cancellations due to insufficient enrollment will be made approximately one (1) to two (2) business days prior to the class start date. Participant withdrawals from a course, may result in a processing fee. If a course is canceled by UTA, participants have the option to transfer to another course, hold their funds in escrow, or receive a refund. No fees will be charged for these transactions if UTA cancels a class.







Environmental Training Institute  
DIVISION FOR ENTERPRISE DEVELOPMENT

140 W. Mitchell St. | Arlington, TX 76019



**100%  
ONLINE,  
SELF-PACED  
COURSES**  
SEE PAGE 2  
FOR DETAILS



**ENVIRONMENTAL  
COMPLIANCE  
& REGULATION  
TRAINING**  
PAGE 6

ENVIRONMENTAL TRAINING | AIR | WATER | WASTE | REGULATIONS | MANAGEMENT



LEARN MORE ABOUT OUR SUITE OF ESG AND RENEWABLE ENERGY COURSES PAGE 4